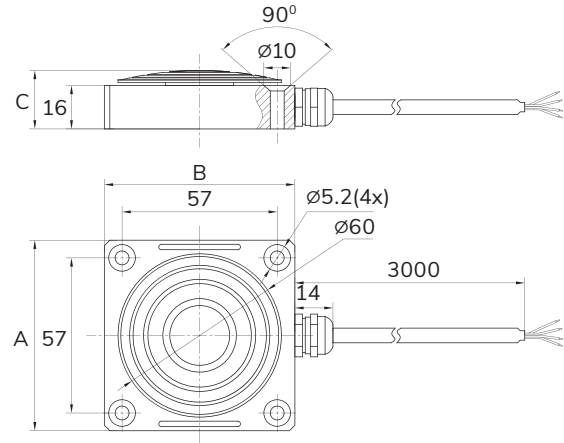




DIMENSIONS / 尺寸



FEATURES & APPLICATIONS / 特点和用途

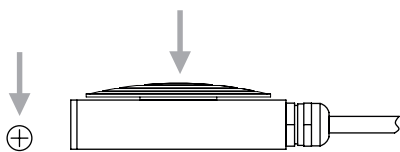
- Compression Type
- Low Profile Height
- Removable Mounting Plate
- Surface Anodized
- Ideal For Aerospace Applications Involving Pedal Force Testing
- Ideal for Automotive Applications Involving Accelerator Or Clutch Testing

- 压式传感器
- 高度低
- 可移动的安装板
- 表面阳极氧化
- 适用于涉及踏板力测试的航空航天应用
- 适用于涉及加速器或离合器测试的汽车应用的理想选择

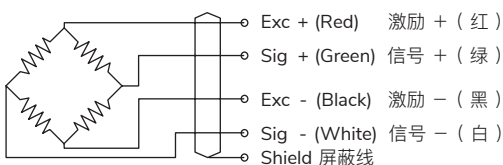
CAPACITIES / 量程

CAP (N)	SIZE (mm)	A	B	C
500/1000/2000/2500		70	70	21.5

LOAD DIRECTION / 受力方向



SCHEMATIC WIRING DIAGRAM / 接线图



**Note:** Cable shield is not connected to element.  
注：屏蔽线不与弹性体相连。

SPECIFICATIONS 详细描述 TECHNIQUE / 技术指标

PERFORMANCE	产品性能	TECHNIQUE / 技术指标
Non-Linearity	非线性	±0.25% of RO
Hysteresis	滞后	±0.1% of RO
Repeatability	重复性	±0.1% of RO
Creep (30min)	蠕变	±0.2% of RO
Zero Balance	零点输出	±2% of RO
ELECTRICAL	电气特性	
Rated Output	输出灵敏度	1.5 ± 10% mV/V
Recommended Excitation	激励电压	10 VDC
Maximum Excitation	最大激励电压	15 VDC
Input Impedance	输入电阻	780 ± 30 Ω
Output Impedance	输出电阻	700 ± 10 Ω
Insulation	绝缘电阻	≥2000 MΩ / 50 VDC
Cable Color Code	连接方式	Input/输入: Red / 红 (E+) Black / 黑 (E-) Output/输出: Green / 绿 (S+) White / 白 (S-)
MECHANICAL	机械特性	
Weight	重量	0.4Kg
Safe Overload	安全超载	120% of RO
Ultimate Overload	极限超载	200% of RO
Material	材料	Aluminium Alloy / 铝合金
Cable Size	电缆线尺寸	Ø4 x 3000 mm
IP Rating	防护等级	IP65
TEMPERATURE	温度特性	
Operating Temperature	工作温度范围	-20 ~ 60°C
Compensated Temp. Range	温度补偿范围	-10 ~ 60°C
Temp. Effect On Output	温度灵敏度漂移	±0.05% of RO / 10°C
Temp. Effect On Zero	零点温度漂移	±0.03% of RO / 10°C
CONFORMITY	遵循	
RoHS		2011/65/EU
CE		2014/35/EU